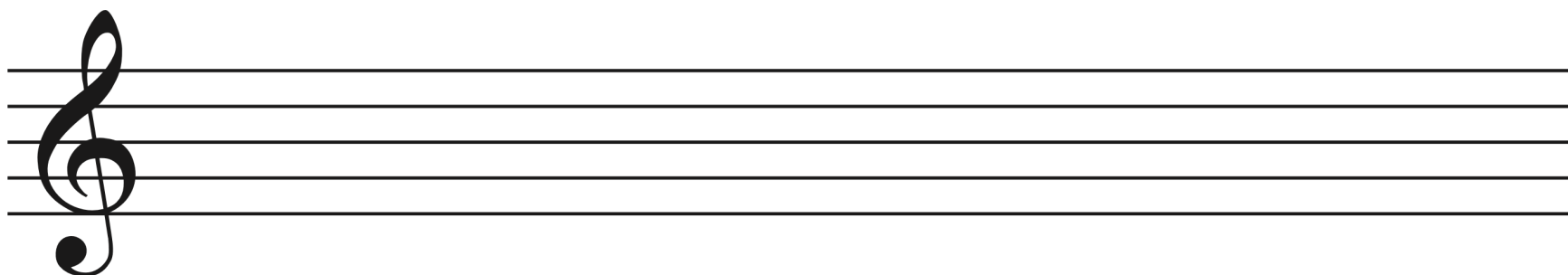
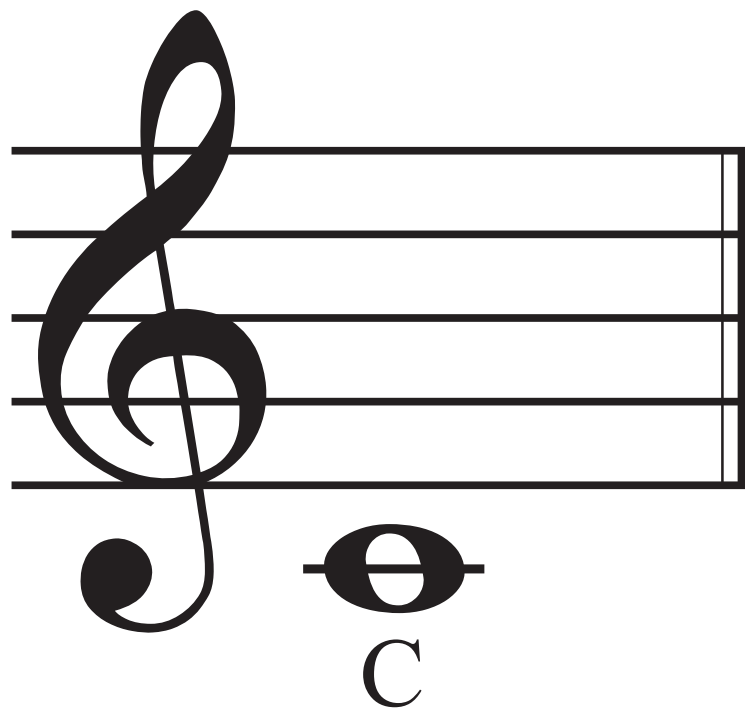
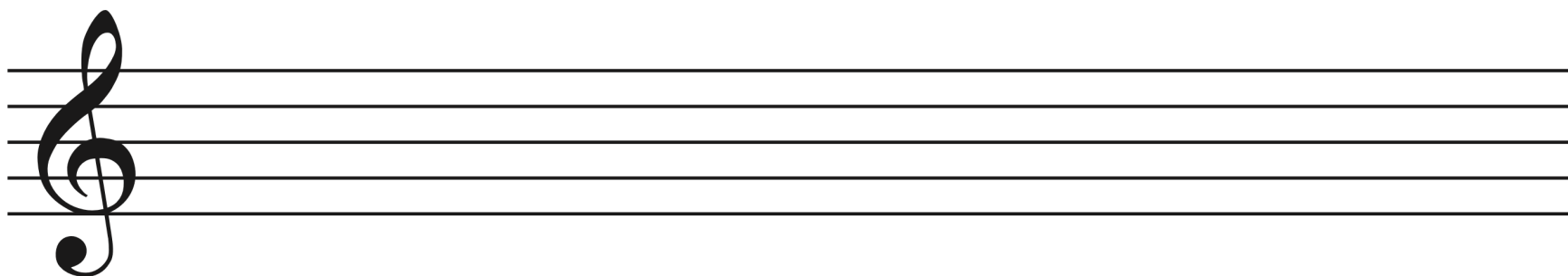
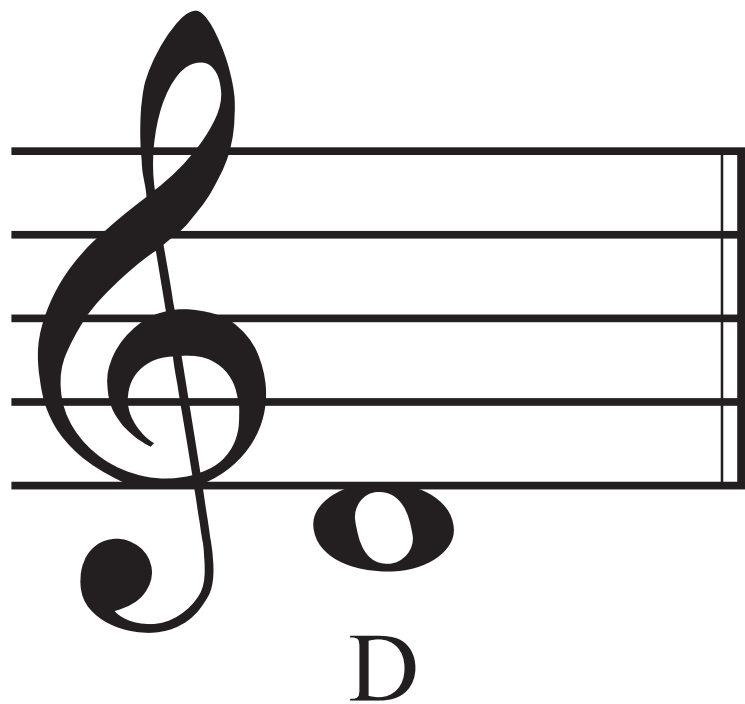
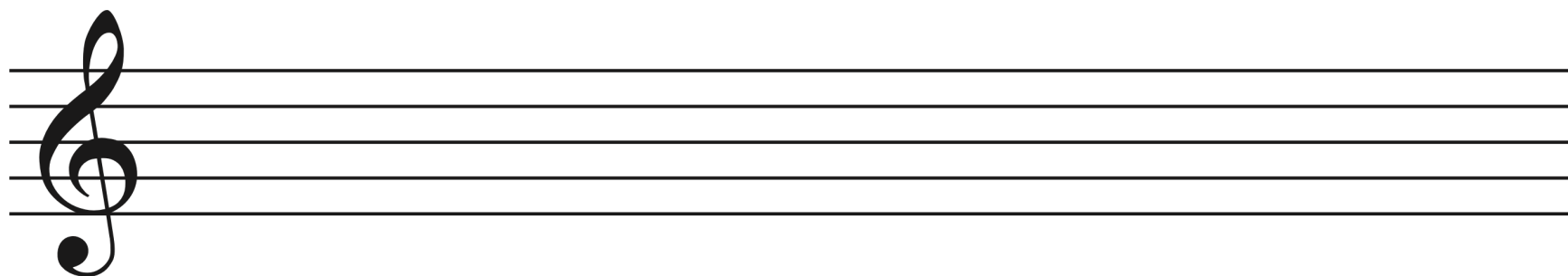
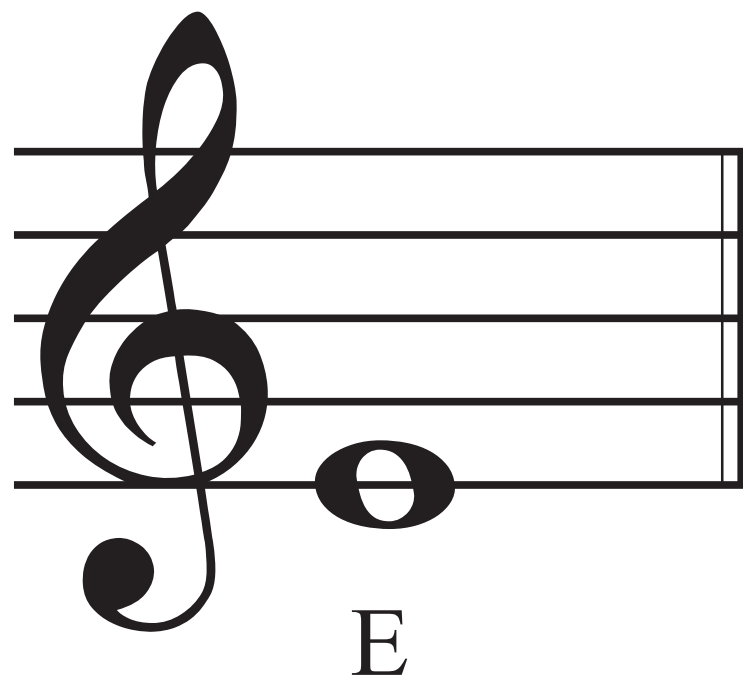


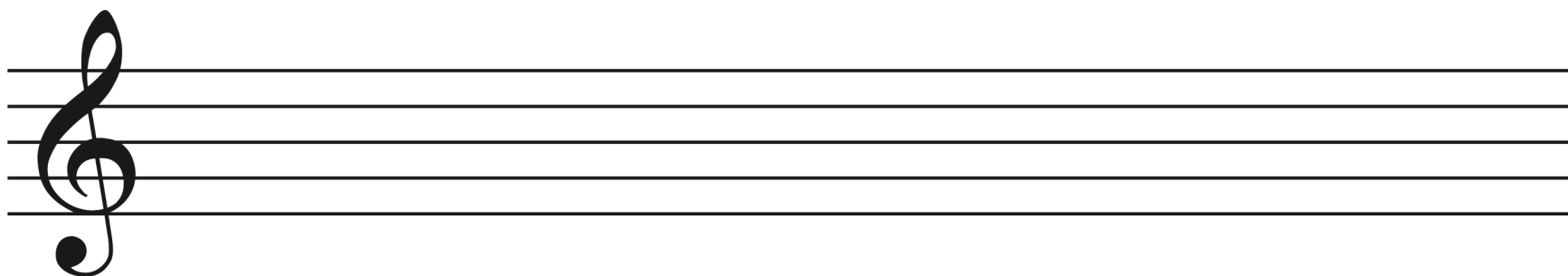
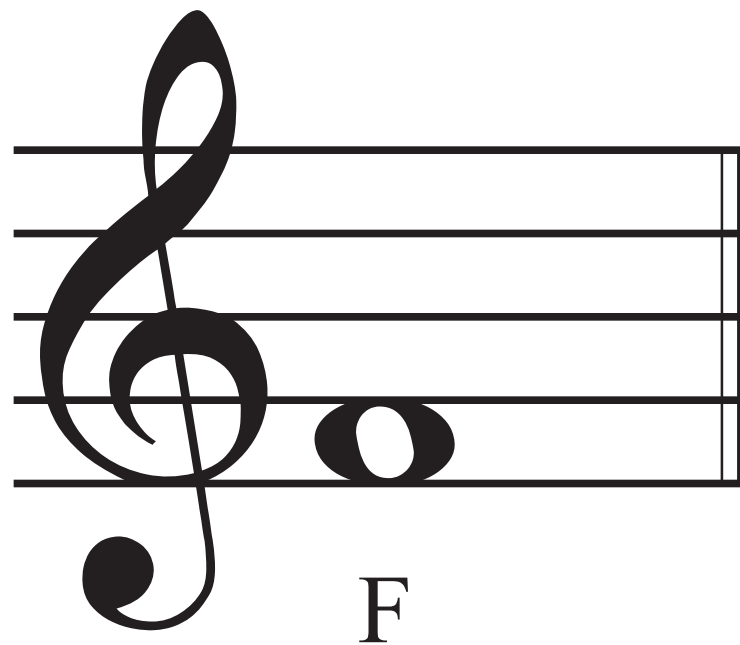
MUZYCZNY
DOMEK

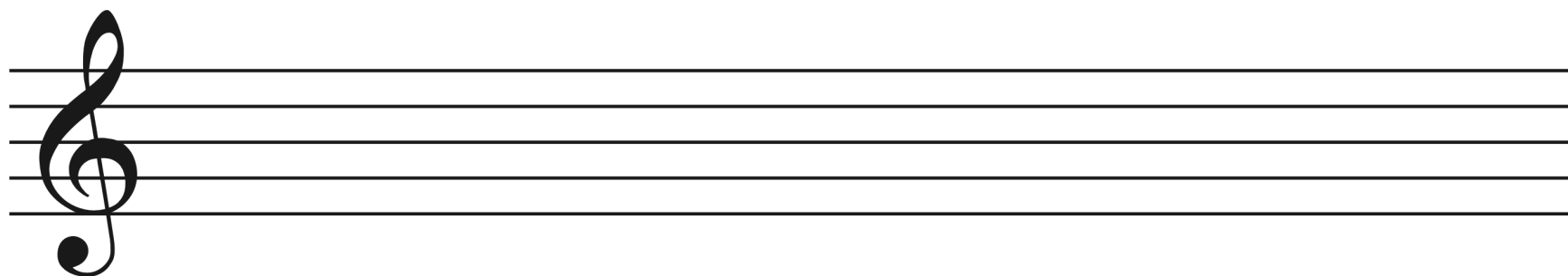
ZABAWY Z GAMĄ C-DUR

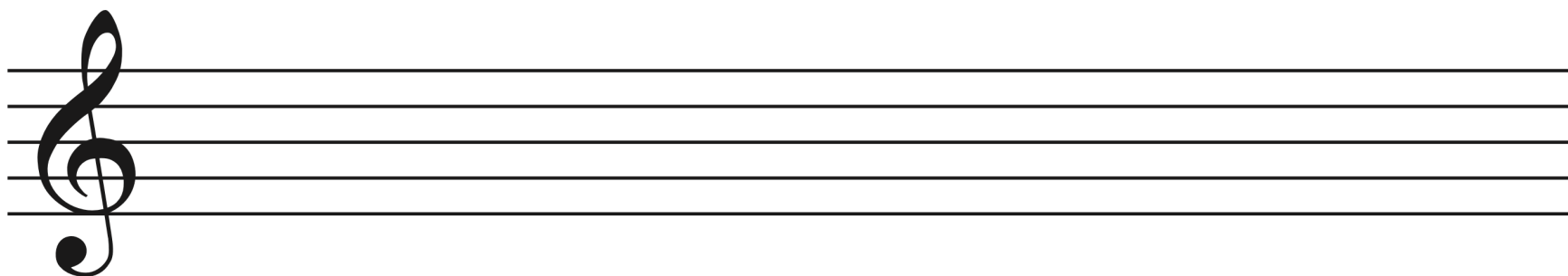


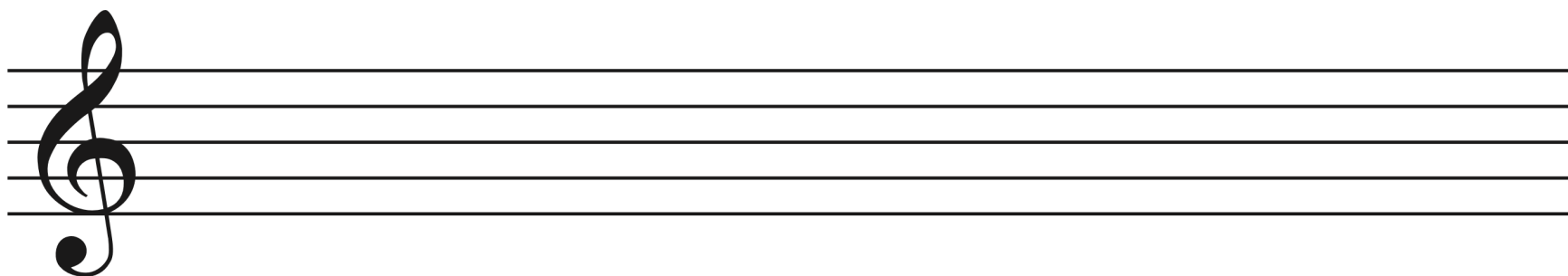
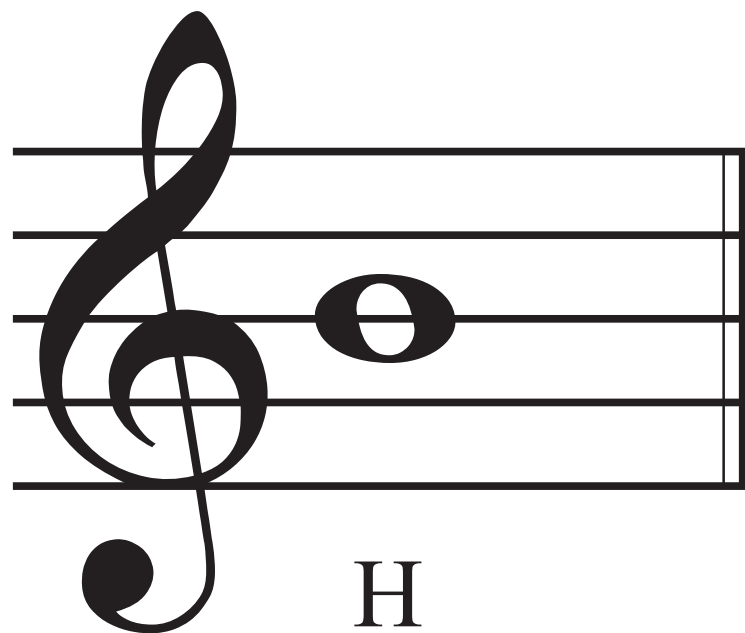


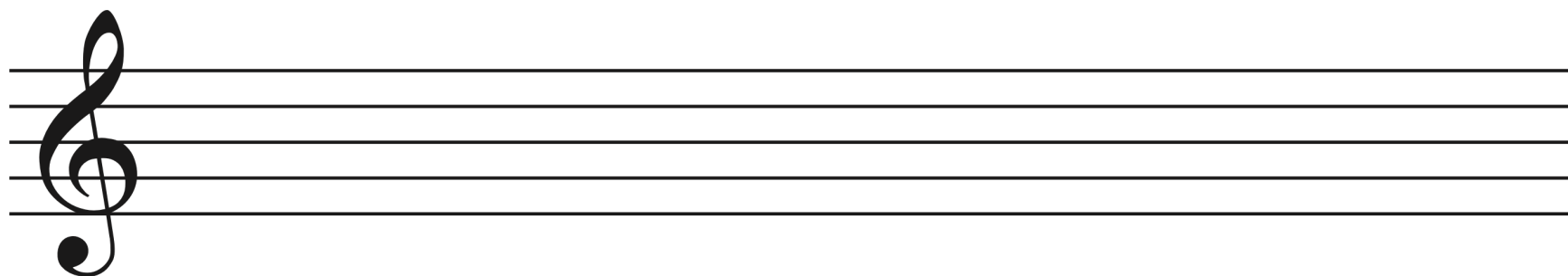
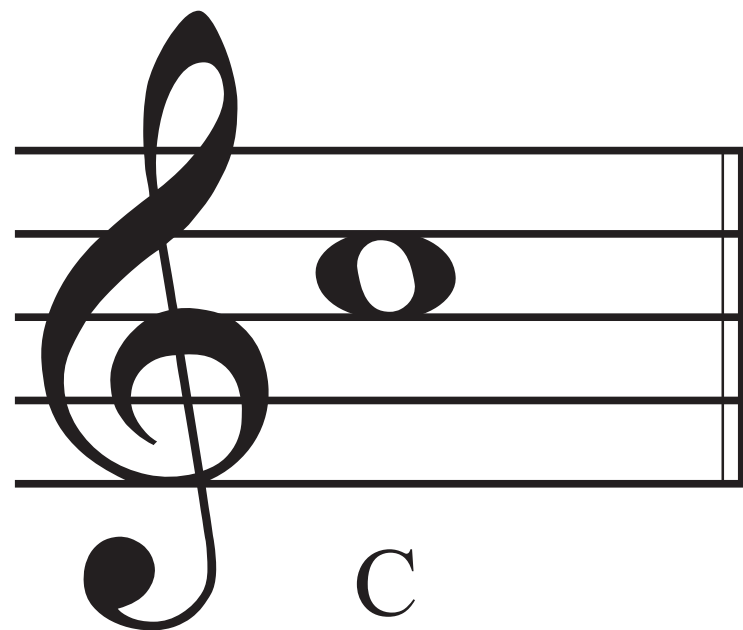






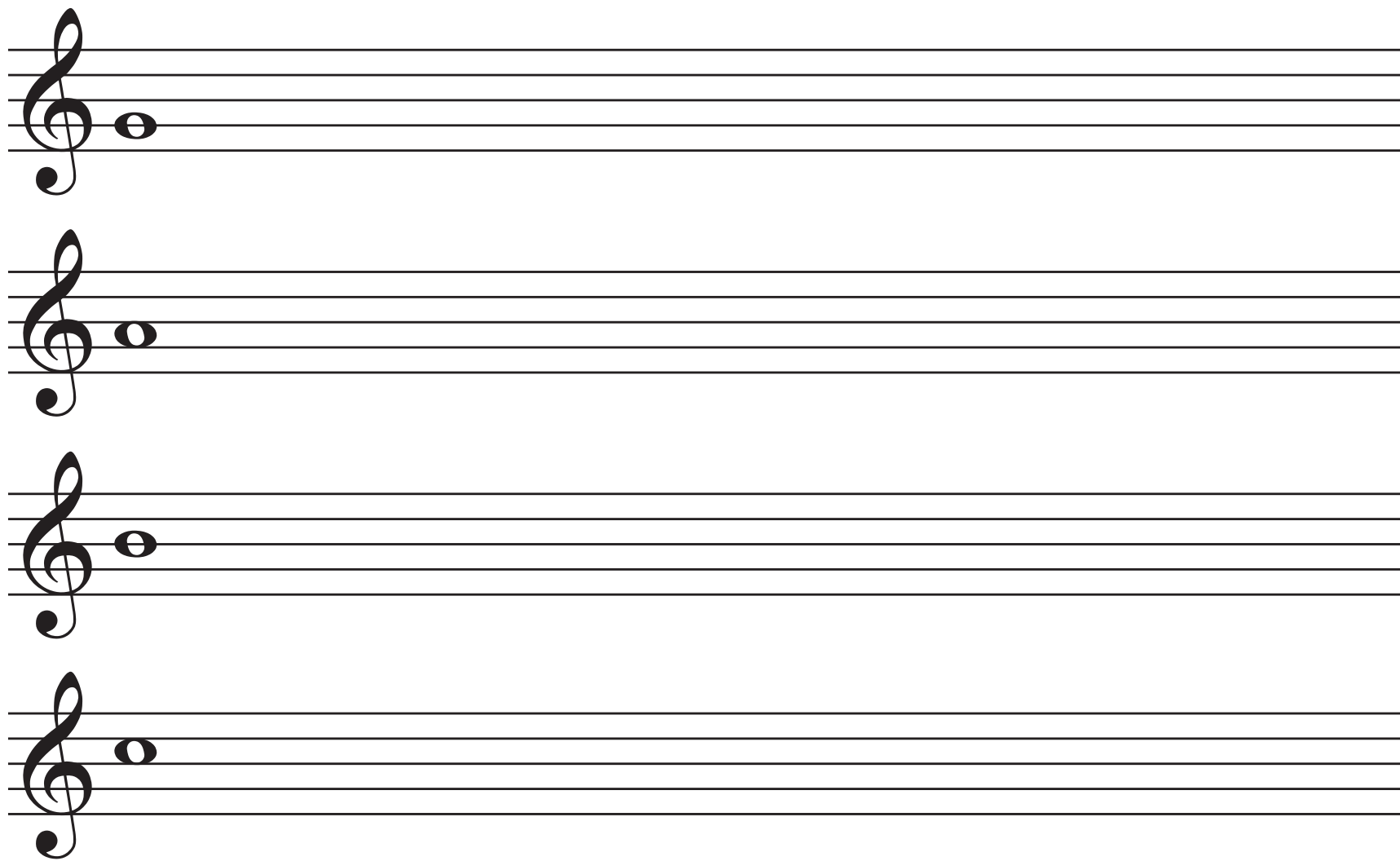


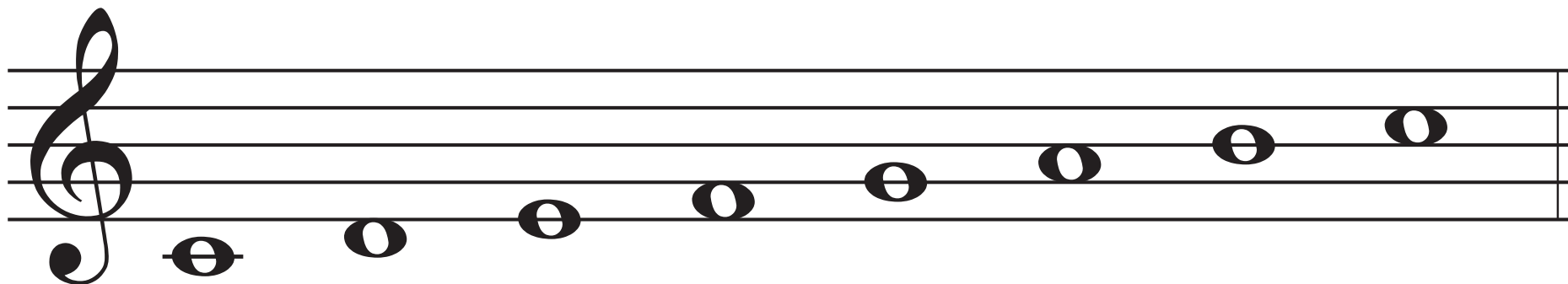




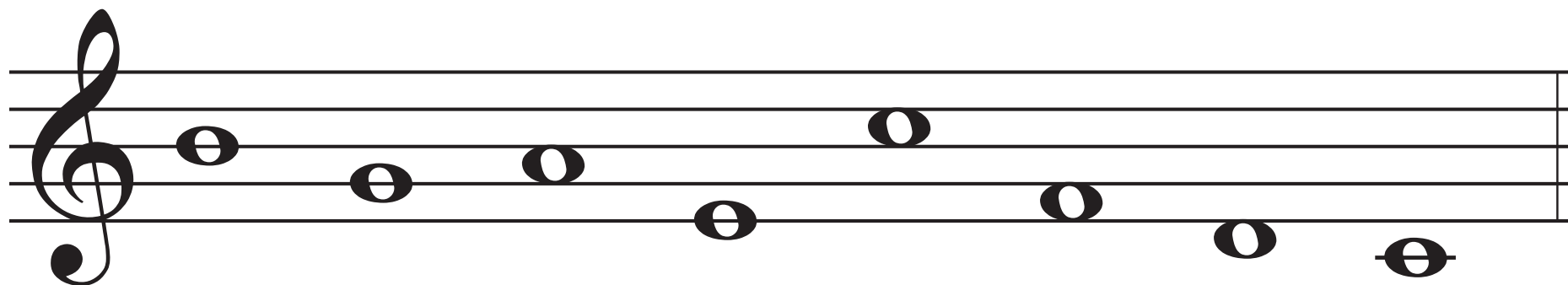
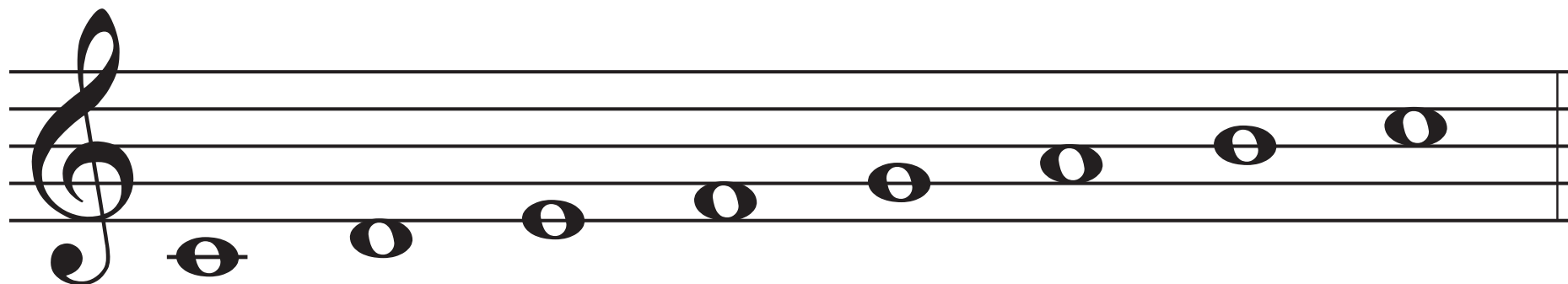


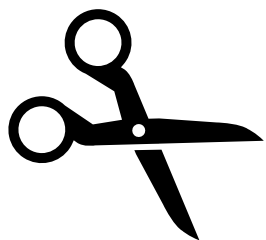
Four musical staves, each with a treble clef and a single note on the second line (G4).





Połącz nutę z górnej pięciolinii z taką samą nutą na dolnej pięciolinii





A five-line musical staff with a treble clef and a single quarter note on the second line.	A five-line musical staff with a treble clef and a single quarter note on the second line.	A five-line musical staff with a treble clef and a single quarter note on the second line.	A five-line musical staff with a treble clef and a single quarter note on the second line.
A five-line musical staff with a treble clef and a single quarter note on the second line.	A five-line musical staff with a treble clef and a single quarter note on the second line.	A five-line musical staff with a treble clef and a single quarter note on the second line.	A five-line musical staff with a treble clef and a single quarter note on the second line.

